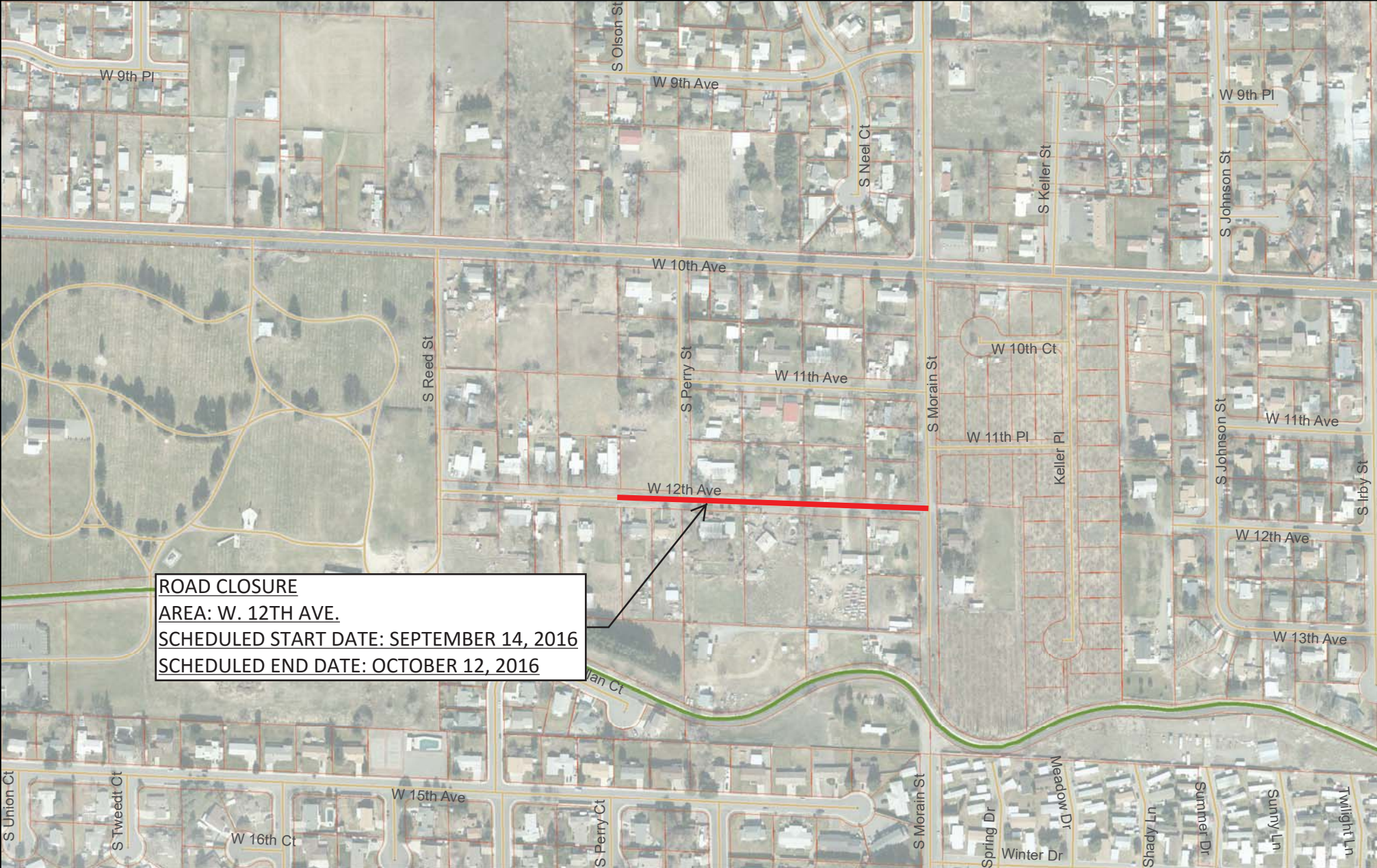
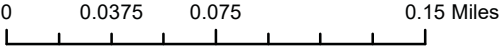


W. 12th Ave. ROAD CLOSURE



ROAD CLOSURE
AREA: W. 12TH AVE.
SCHEDULED START DATE: SEPTEMBER 14, 2016
SCHEDULED END DATE: OCTOBER 12, 2016



MAP BY: PRINT DATE:

The Kennewick Irrigation District does not warrant, guarantee, or accept any liability for the accuracy, precision, or completeness of any information shown or described herein or for any inferences made therefrom. Any use made of this information is solely at the risk of the user.

