

Watch for leaks and cracks that may have
been caused by freezing over the winter.

FLOOD & AFTER HOURS SERVICE HOTLINE (509) 586-8000

Service Calls & General Customer Service

(509) 586-9111 ext. 2

or customerservice@kid.org

APR-OCT 8:00AM-5:00PM

NOV-MAR 8:00AM-4:30PM



April 2014

INSIDE THIS ISSUE

President's Message.....1

Smart Irrigation Events.....1

How to Apply for Relegation ...2

District Manager's Message ...3

Proud to be KID.....4

The Amon Wasteway.....5

Assessments Due April 30th!...6



Kirk Rathbun, Board President

It is a real privilege to live in the Pacific Northwest. We live in an area that can support a variety of agriculture and industry. Apples, cherries, soft fruits, wine and table grapes, asparagus, alfalfa, grain corn, sweet corn, sugar beets, and on and on. This agricultural production helps support a host of processing, production, and support industries that are located in our area. From those that produce organics on micro-farms, to those family farms that produce on hundreds or thousands of acres, each have found a market that depend on what they supply.

While supplying water to agriculture is a great responsibility for KID, we have been on the forefront of the effort to bring water to residential subdivisions, parks, schools, hospitals, malls and restaurants. The conversion from agriculture to urban delivery has presented many challenges. The way water is used in urban areas is altogether different than agriculture. But that is the challenge, and your Kennewick Irrigation District will meet that challenge. With canal automation, in-town standby storage, level sensing pond controls, and a host of other technologies our district will extend every effort to deliver your water. Your KID Staff and Board look forward to serving you and meeting the needs of our expanding community.

As the KID moves forward with many different conservation efforts, concurrently, each one of us as customers need to consider the careful use of the irrigation water we have. The recent snow in the Cascades has made drought less ominous this year, but drought can happen upon us any year and could even force rationing. Hope for the best, prepare for the worst, this is current planning when it comes to drought and other issues.

We look forward to a successful season delivering your water, safely and efficiently.

You're Invited to Our 2nd Annual KID Community Event



Saturday May 17th 11am - 2pm . . . 3 locations!

Smart Irrigation Tips * Answers to Your Irrigation Questions * Fun!

Last year KID partnered with Home Depot in Kennewick for a community event to reach out to our customers about irrigation water topics such as canal safety and irrigation tips. We had a great time getting to know our ratepayers and hearing first hand, concerns and suggestions regarding their service.

The event was so successful we are bringing it to you again this year; We have expanded to be at **3 locations** (Home Depot in Kennewick and Richland and Lowes in Kennewick) to better serve our community!



3910 W 27th Ave.
Kennewick

1451 Tapteal Dr.
Richland



1020 N Colorado
Kennewick
(Col. Ctr. Blvd.)

We hope you can join us to see what's new with KID, what has changed over the last year. And most importantly, get information on watering, pumps, filters, sprinklers and more. Like last year, we will have an area for the kids, informational booths for the adults and BBQ hotdogs for everyone!

**Bring the
Kids!**





Congratulations Seth DeFoe!

Please join us in congratulating Seth DeFoe on his recent promotion to Planning Manager. Seth has over ten years of experience working for various levels of government in environmental analysis and GIS.

His duties at KID include environmental compliance, planning and water resources management and managing the District's GIS program. Seth first joined KID in April 2010 as our GIS Specialist and holds a Bachelor's Degree in Geography from Oregon State University and a Master's Degree in Environmental Planning from Eastern Washington University.

In his spare time he enjoys running, hiking, and spending time with his wife and two children.

Do you pay irrigation assessments to KID but are not able to access the irrigation water?

You may qualify to relegate your water allotment and be removed from the KID assessment roll.

NOTE: You do not qualify if you have access to KID irrigation service - including private line areas.

**THE APPLICATION PERIOD IS OPEN
MARCH 1 - MAY 31, 2014 FOR THE
2015 ASSESSMENT YEAR**

Instructions and application forms are available to download at www.kid.org:

Go to: Billing and Water Services, Water Service Information then Irrigation Water Allotment Relegation.

A checklist is provided to assist you in completing the relegation application and requires an intake appointment. For questions or to schedule a relegation appointment, call Lynda at (509) 586-9111 ext. 120.

Be Smart About Your Irrigation...



When is the **best time** to water?

Set your timers to water appropriately for your lawns needs. Working together with your neighbors is also a good way to get the most from your irrigation system. When everyone is watering at the same time expect to see pressure reduced. Peak demand times tend to be 5-10 AM and 4 -7 PM. Staggering your schedule with your neighbors is the best time to water.

Check out ext.wsu.edu (Washington State University Extension) for many publications offering tips for a healthy lawn .



How much water is **too much**?

Most lawns in the KID grow within the first foot of soil, so it's important to keep that layer appropriately moist. KID recommends watering 3/8" every other day during the months of April, May, September and October, and 1/2" every other day during the months of June, July and August. Apply enough water each time to penetrate the root zone. Watering deeply encourages deep root growth.



How can I **reduce water waste**?

Sweep instead of spraying your driveway with water, use a bucket, sponge and sprayer on the end of a hose when washing your car. Water the lawn with "gray" water. Check your automatic sprinkler systems for proper time settings and operation frequently. Avoid watering streets and sidewalks and turn off the sprinklers in rainy or windy conditions.



Know what's below.
Call before you dig.

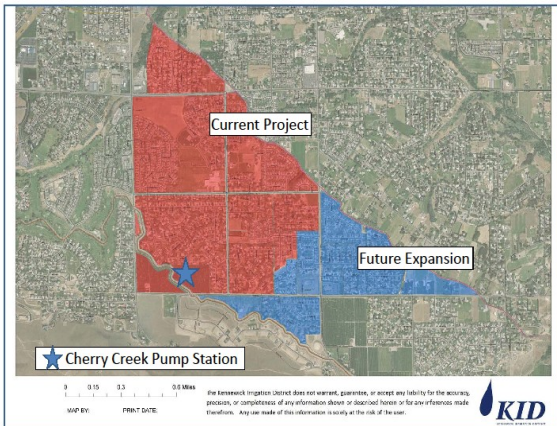
Installing a sprinkler system?

Remember...two business days prior to digging: CALL 811 to speak to a live person that will take down your project details; it only takes about 10 minutes.



KID Crews Installing Canal Liner

CHERRY CREEK SERVICE AREA



**Automated Gates Help
Control Canal Flow**



From the Desk of Charles Freeman, District Manager



These are exciting times at the Kennewick Irrigation District. After decades of discussion on how to irrigate Red Mountain, 2014 marks the end of that discussion. The Red Mountain project will be complete this summer, resulting in 1,785 acres being irrigated from the Yakima River. Numerous deep wells will be idled and over 1,300 of those acres will be irrigated for the first time. Water will hit the ground in late July or early August for system testing and next year will be their first full irrigation season. This \$20.5M project is being paid for by the local improvement district members and not with KID general assessments.

Additionally, this project will not impact water supply for existing rate payers; in fact, this project brings a big benefit to all rate payers in low water years. The water duty of KID rate payers in the rest of the District is 3.5 acre feet per year, but wine grapes only need 1.5 acre feet per year and the new Red Mountain KID customers will have this lower water duty. The difference will be placed in trust with the state for use in low water years. This means the next time KID's water supply is reduced (pro-rated) new reserves will be available.

We all read and hear of the dire drought conditions impacting the west; the Yakima River Watershed is not immune. KID is taking steps to be more efficient with our allocation. The KID Board of Directors adopted a large and vigorous capital improvement program that completes projects that, among other things, enhances public safety, and saves water by lining canals minimizing seepage. Over the last four years, more than eight miles of canal were lined. By leveraging the capital charge to match federal and state grant dollars, KID stretches the dollars paid by the ratepayers.

No one knows for certain when the next drought will hit. We all need to be prepared and KID is striving to meet this challenge. KID's volunteer citizen Planning Committee worked hard on a drought plan the board will soon consider for approval. A special drought reserve was created in 2012 to fund future drought responses. The new drought plan will prioritize how monies are spent in preparation for our next drought. Canal automation and canal lining are at the top of the list. The goal is to be able to withstand a low water year and still provide consistent water for the communities prioritized needs.

The District makes every effort to operate efficiently while improving customer service. Operating assessments didn't go up for four years, but this year a 3.5% increase was necessary. The capital assessment is unchanged. The capital improvement program continues to be a huge success. A new off line reservoir design for Division 4 is nearing completion. This reservoir will fill during off-peak hours to help meet demand during peak times for over 6,000 of our urban customers as well as agricultural customers farther down the canal.

The future is exciting and challenging. We at KID will continue to reach out to our community using technology, newsletters and open houses. We want to hear your concerns and suggestions to help us continue to improve and to focus on our core mission to deliver raw Yakima River water into the heart of the Tri-Cities and help make the desert bloom.

Proud to be... KID!

Do you know the person on the other end of the phone when you call KID? We have great staff who are here to help in many ways. Let us introduce you to a few of our team members...



Dean Dennis, Director

Dean would like to thank the voters of Kennewick Irrigation District (KID) for having faith in him and electing him to the Board of Directors. Dean feels it is a very important position and with it comes a great responsibility to each and every rate payer in the district. Dean is looking forward to being able to support both the agricultural and urban areas of the District.

Dean would like to thank the staff of KID for the warm welcome he has received since being elected.

Dean promises to be a strong member of the Board and support the KID to the fullest.



Dana Hernandez, Customer Account Supervisor

Dana joined KID in October of 2012. She earned her Bachelor's Degree in Business Management from the University of Phoenix and has over 12 years of supervisory and management experience. Dana has enjoyed working with the District's rate payers and improving the level of customer service to our customers.

Dana grew up in Kennewick. She is married with 3 children and enjoys camping and spending time with her family.



Perla Gleed, Customer Service Specialist

Perla has spent most of her life in Moses Lake. She earned her Associate's Degree in Accounting and worked several years for an irrigation company there. A year ago, the family moved to Hermiston, Oregon and this past summer bought a home in Pasco.

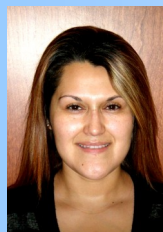
Perla worked for the City of Umatilla prior to joining the team at KID. Family is very important to Perla. She and her husband enjoy fitness, like golf, walking, bike riding, and camping. She is a former competitive power lifter and enjoys gardening.



Robert Blain, Assistant Manager of Operations & Maintenance

Robert joined KID last fall and brings with him 13 years of experience in municipal government. Robert is a Tri City native, who grew up in Benton City. He attended Columbia Basin College and earned his Engineering Tech Degree and currently holds his Engineer In Training (EIT) Certificate.

Robert is married with 3 children and resides in West Richland. In his spare time, Robert enjoys fly fishing and hunting,



Dora Lopez, Customer Service Specialist

Dora was born in Richland and currently resides in Finley. She has resided in the Tri Cities her entire life and attended Pasco and Riverview High Schools. She is currently a part time student at CBC.

Dora enjoys spending her free time with her 9 year old son and family. She especially enjoys outdoor activities with her son and volunteering at his school. Her father owns a ranch in Finley and she and her son spend time helping out with all the farm animals. Dora is excited to be a part of the KID team!



Mike Frey, GIS & Environmental Compliance Specialist

Born and raised in Pocatello, Idaho, Mike received his Bachelor's Degree in History from Idaho State University in 2010 with an emphasis on Environmental History of the West and Geographic Information Systems. Mike earned his Master's Degree in Geographic Information Science from Idaho State University in 2012. His Research and Graduate Thesis was: The Effects of Climate Variability on Water Resources and Water Rights on Idaho's Snake River Plain.

Mike joined KID after working for 2 years as GIS / Natural Resources Project Manager for Sundance Consulting Inc. and is also a Former Chef and Restaurant owner. Mike is married with 3 Children and enjoys backpacking, trail running, mountain biking and fishing.

The KID wants you to know that irrigation water may contain harmful microbial contaminants and should not be ingested. Also, as the weather warms, parents should avoid having their children play in irrigation water and not use irrigation water to fill pools. Please help your children understand the dangers of irrigation canals and remember...

**CANALS ARE NOT FOR PLAY,
STAY AWAY!**





The Amon Wasteway

The Amon Wasteway system is a planned and partially constructed operational feature of the Kennewick Irrigation District (KID). When the Kennewick Division of the United States Bureau of Reclamation Yakima Project was conceived and built in the late 1940s and early 1950s, a series of drains and wasteways were designed to convey operational spills from certain points on the canal system, and to drain agricultural return flows from areas in topographic low points that were anticipated to collect water from applied irrigation practices. Since 1955, a right-of-way easement has given KID the right to construct, reconstruct, operate, and maintain the Amon Wasteway, as well as construct and operate adjacent service roads, and to spill water into the wasteway. These rights include the ability to manage vegetation within the right-of-way, and to manage the water course to ensure that the water stays within the intended conveyance channel, and does not pose a flood hazard to surrounding properties.

Over time, some of these drains and wasteways have been overgrown with riparian vegetation, and wetland habitat has developed in and adjacent to these channels. These areas, especially those in the Amon Wasteway and East Badger Drain, have attracted notice over time as being “oases” in the desert, providing unique aquatic habitat in a region with little precipitation and no natural streams with any intermittent or perennial flows, other than the major rivers.

Studies in the Amon Wasteway system have shown that nearly all of the water present (>98%) results from applied irrigation return flows, canal seepage, and operational spills from the KID canal system. In 1975, the Department of Ecology issued an opinion that all of the water in Amon is within KID’s right to use and reuse for irrigation purposes, and cannot be appropriated or claimed by other parties. The Acquavella adjudication (which after 36 years is nearly complete) has confirmed this by not recognizing any other water rights in the Amon Wasteway or East Badger Drain. In fact, KID serves 1,500 customers out of the Amon Wasteway at the Gage Pumps, and is exploring the possibility of serving more customers from the wasteway as well as the East Badger Drain.

As the District moves forward with implementing the water management efficiencies that are required in the face of climate change and to provide more water in the Yakima River to benefit threatened fish, less water will be found in Amon. KID is currently engaged in a canal lining program that will greatly reduce seepage in the canal system. The District is also moving forward with constructing a series of control gates and a re-regulation reservoir on the Main Canal that will better manage the water resource, and will reduce operational spills into Amon. The result will be less water diverted at Prosser, less water lost from the canal system through seepage and operational spills, and less water flowing through the Amon system. Despite this, there will always be some flows in Amon that result from percolating water derived from applied irrigation. KID recognizes the value to the community that the unique ecological features of the Amon drainage provide, and tries to balance these values with KID’s right to operate and maintain the drainage and conveyance system as designed. KID will continue to be a good steward of these resources into the future, while increasing efficiencies that over time will allow the Amon Basin to more closely resemble the dry canyon that it was in its natural state, before the onset of irrigation.



12 West Kennewick Avenue
Kennewick, WA 99336
509 586-9111 ph
509 586-7663 fax
www.kid.org

PRSR STD
U.S. POSTAGE
PAID
PASCO, WA
PERMIT NO. 361



Thank You Mother Nature!

Recent Snowfall Boosts **Water Supply**

Just as the dreaded word "drought" started to buzz, Mother Nature answered the call in late February with several measurable snowfalls in the Cascade Mountains. The snowfall in the Cascades is crucial to KID as snowmelt is what supplies our reservoirs, ultimately providing KID and its customers irrigation water throughout the irrigation season.

Just days before the snowfall in late February, the forecast for snowpack was only between 57-62% of average. By the beginning of March, that number had increased to 100% of average. Being a senior pro-ratable water right holder, low snowpack reduces water supply, which can affect the amount of irrigation water the KID receives to pass on to ratepayers. So remember, while we're wishing that wonderful spring weather would hurry and get here, we still needed those cold days and snowfall to have water for our spring flowers and crops!



AVOID PAYING ASSESSMENT FEES & INTEREST

There are two payment options for paying your annual Assessment and avoiding fees or interest:

Option A: Pay assessment in full by April 30th of each year

Option B: Pay first half by April 30th of each year, pay second half by October 31st of each year

This is the only way to avoid a delinquency fee and interest! Ensure your first half installment reaches the KID on or before April 30th.